



TRUE MANUFACTURING CO., INC.  
U.S.A. FOODSERVICE DIVISION

2001 East Terra Lane • O'Fallon, Missouri 63366-4434 • (636)240-2400  
Fax (636)272-2408 • Toll Free (800)325-6152 • Intl Fax# (001)636-272-7546  
Parts Dept. (800)424-TRUE • Parts Dept. Fax# (636)272-9471 • www.truemfg.com

Project Name: \_\_\_\_\_

Location: \_\_\_\_\_

Item #: \_\_\_\_\_ Qty: \_\_\_\_\_

Model #: \_\_\_\_\_

A/A #

SIS #

Model:

**TGN-1R-1G**

**TGN-Series:**

*Reach-In Glass Swing Door Refrigerator with Hydrocarbon Refrigerant*



## TGN-1R-1G

- ▶ True's glass door reach-in's are designed with enduring quality that protects your long term investment.
  - ▶ Designed using the highest quality materials and components to provide the user with colder product temperatures, lower utility costs, exceptional food safety and the best value in today's food service marketplace.
  - ▶ Factory engineered, self-contained, capillary tube system using environmentally friendly R290 hydrocarbon refrigerant that has zero (0) ozone depletion potential (ODP), & 0.02 global warming potential (GWP).
  - ▶ High capacity, factory balanced refrigeration system that maintains cabinet temperatures of 33°F to 38°F (5°C to 3.3°C) for the best in food preservation.
  - ▶ Exterior - Stainless steel front. Aluminum ends. Corrosion resistant GalFan coated steel back and top.
  - ▶ Interior - attractive, clear coated aluminum liner. Stainless steel floor with coved corners.
  - ▶ Energy efficient, "Low-E", double pane thermal glass door.
- Bottom mounted units feature:**
- ▶ "No stoop" lower shelf.
  - ▶ Compressor performs in coolest, most grease free area of kitchen.
  - ▶ Easily accessible condenser coil for cleaning.
  - ▶ True's self-cleaning reverse condensing unit technology eliminate the need to clean the condenser coil by reversing the fan direction upon each startup of the unit, which causes air to blow through the condensing coil and effectively removes any dirt, dust, and debris.

## ROUGH-IN DATA

Specifications subject to change without notice.  
Chart dimensions rounded up to the nearest 1/8" (millimeters rounded up to next whole number).

| Model     | Doors | Shelves | Cabinet Dimensions<br>(inches)<br>(mm) |            |             | HP         | Voltage                      | Amps        | NEMA<br>Config. | Cord<br>Length<br>(total ft.)<br>(total m) | Crated<br>Weight<br>(lbs.)<br>(kg) |
|-----------|-------|---------|--|------------|-------------|------------|------------------------------|-------------|-----------------|--|------------------------------------|
|           |       |         | W                                      | D          | H*          |            |                              |             |                 |  |                                    |
| TGN-1R-1G | 1     | 3       | 28¾<br>729                             | 33¾<br>858 | 78½<br>1994 | 1/5<br>1/6 | 120/60/1<br>220-240V/50-60Hz | 1.7<br>0.65 | 5-15P<br>▲      | 10<br>3.05                                 | 320<br>145                         |

\* Height does not include 5" (127 mm) for castors or 6" (153 mm) for optional legs.

\* Depth does not include 1¾" (44mm) for handle.

▲ Plug type varies by country.



APPROVALS:

AVAILABLE AT:

6/25

Printed in U.S.A.

Model:

**TGN-1R-1G**

**TGN-Series:**

*Reach-In Glass Swing Door Refrigerator with Hydrocarbon Refrigerant*

**True®**

## STANDARD FEATURES

### DESIGN

- True's commitment to using the highest quality materials and oversized refrigeration systems provides the user with colder product temperatures, lower utility costs, exceptional food safety and the best value in today's food service marketplace.

### REFRIGERATION SYSTEM

- Factory engineered, self-contained, capillary tube system using environmentally friendly R290 hydro carbon refrigerant that has zero (0) ozone depletion potential (ODP), & 0.02 global warming potential (GWP).
- High capacity, factory balanced refrigeration system that maintains cabinet temperatures of 33°F to 38°F (.5°C to 3.3°C) for the best in food preservation.
- State of the art, electronically commutated evaporator and condenser fan motors. ECM motors operate at higher peak efficiencies and move a more consistent volume of air which produces less heat, reduces energy consumption and provides greater motor reliability.
- Bottom mounted condensing unit positioned for easy cleaning. Compressor runs in coolest and most grease free area of the kitchen. Allows for storage area on top of unit.
- Automatic defrost system time-initiated, temperature-terminated. Saves energy consumption and provides shortest possible defrost cycle.

- True's self-cleaning reverse condensing unit technology eliminate the need to clean the condenser coil by reversing the fan direction upon each startup of the unit, which causes air to blow through the condensing coil and effectively removes any dirt, dust, and debris

### CABINET CONSTRUCTION

- Exterior - Stainless steel front. Aluminum ends. Corrosion resistant GalFan coated steel back and top.
- Interior - attractive, clear coated aluminum liner. Stainless steel floor with coved corners.
- Insulation - entire cabinet structure and solid door are foamed-in-place using a high density, polyurethane insulation that has zero ozone depletion potential (ODP) and zero global warming potential (GWP).
- Welded, heavy duty steel frame rail, black powder coated for corrosion protection.
- Frame rail fitted with 4" (102 mm) diameter stem castors - locks provided on front set.

### DOOR

- "Low-E", double pane thermal glass assembly with extruded aluminum frame.
- Barrel lock standard.
- Door fitted with 15" (381 mm) long extruded heavy duty handle.
- Magnetic gasket of one piece construction, removable without tools for ease of cleaning.
- Positive seal self-closing door.
- Field reversible door hinging.

### SHELVING

- Gastronorm dual slide system with 3 gray wire shelves and 12" X 20" (305 mm x 508 mm) pan storage.

### LIGHTING

- LED Interior lighting.

### MODEL FEATURES

- Exterior temperature display.
- Evaporator is epoxy coated to eliminate the potential of corrosion.

### ELECTRICAL

- Unit completely pre-wired at factory and ready for final connection to a 120/60/1 phase, 15 amp dedicated outlet. Cord and plug set included.



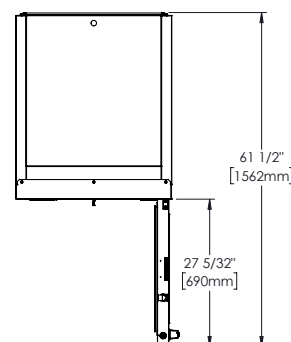
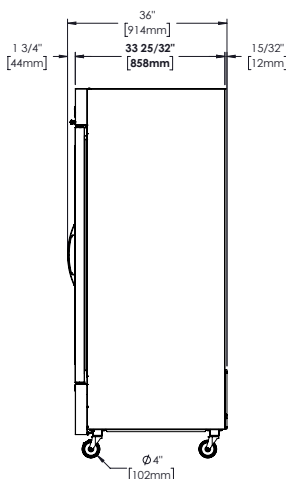
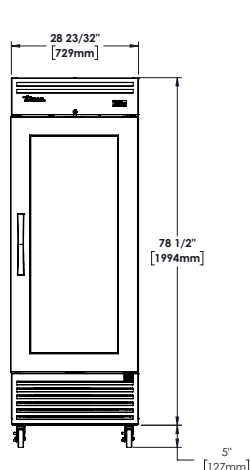
115/60/1  
NEMA-5-15R

### OPTIONAL FEATURES/ACCESSORIES

Upcharge and lead times may apply.

- ☐ 220-240V/50-60Hz
- ☐ 4" (102 mm) legs.
- ☐ 6" (153 mm) legs.
- ☐ 6" (153 mm) seismic/flanged legs.
- ☐ Additional shelves.
- ☐ #3 Universal tray slide kits.
- ☐ #1 Angle tray slide kits.

## PLAN VIEW



METRIC DIMENSIONS ROUNDED UP TO THE NEAREST WHOLE MILLIMETER

SPECIFICATIONS SUBJECT TO CHANGE WITHOUT NOTICE



| Model     | Elevation | Right | Plan | 3D | Back |
|-----------|-----------|-------|------|----|------|
| TGN-1R-1G |           |       |      |    |      |

**TRUE MANUFACTURING CO., INC.**

2001 East Terra Lane • O'Fallon, Missouri 63366-4434 • (636)240-2400 • Fax (636)272-2408 • Toll Free (800)325-6152 • Intl. Fax# (001)636-272-7546 • [www.truemfg.com](http://www.truemfg.com)