



**True**  
REFRIGERATION

GRAB-N-GO

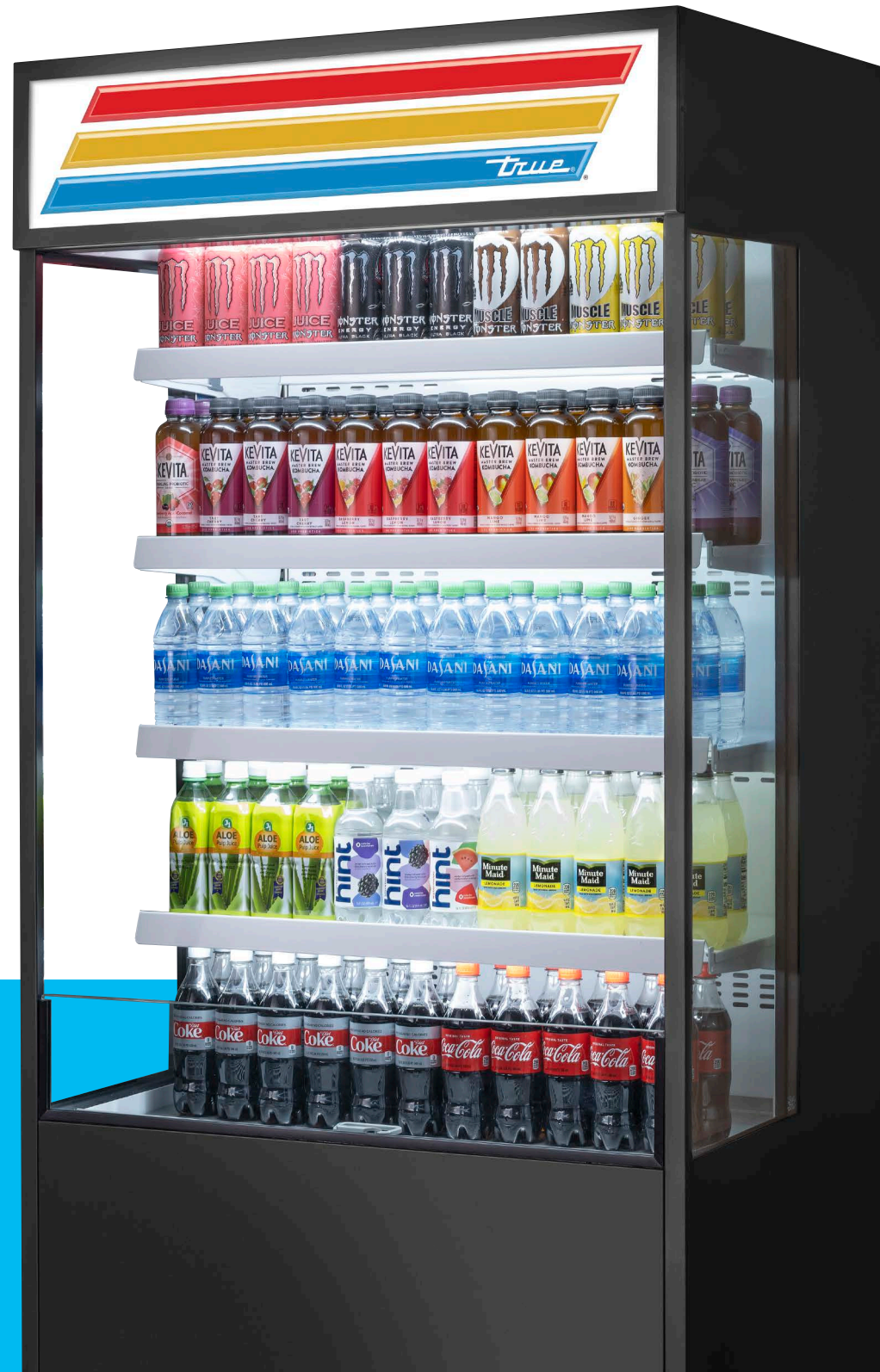
# TOAM OPEN AIR MERCHANDISERS

Open-Front Product Displays • Easy Access Products • High-Impulse Sales

# TOAM

## True Open Air Merchandisers

True's TOAM lineup focuses on the modern consumer's fast-paced lifestyle and offers Grab 'n Go convenience resulting in high impulse sales for any application.



# HEALTHY Snacks



Food to go continues to out-perform total dining out market.

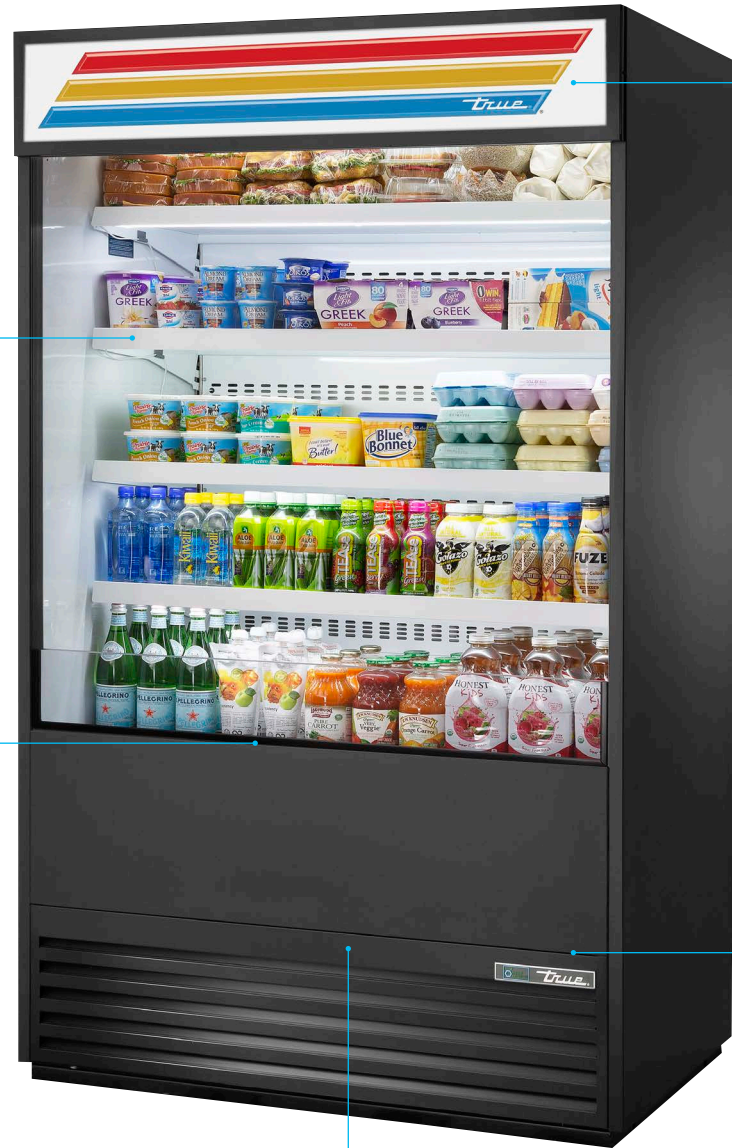


Nearly three quarters of the population purchase food *on-the-go* at least once a week.



Speed + Convenience = NO DOORS!

Temperature is at the heart of every True product, and our selection of Open Air Merchandisers are no exception.



**LED illuminated Shelving**  
Each shelf is illuminated for enhanced product presentation and visibility.



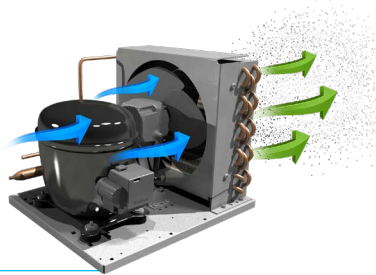
**Built-in Night Cover**  
Each shelf is illuminated for enhanced product presentation and visibility.



**Impulse Sales**  
Air curtains make it easy to view and shop for products leading to impulse sales.



**Backlit Sinage, Custom Graphics**  
Available on select models and customizable to your brand.



**RCU Technology**  
Allows for the reversal of the condensing fan motor helping to keep the coil clean and reducing energy consumption by as much as 20%.

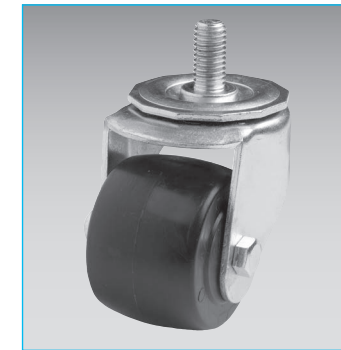


**R290 Hydrocarbon Refrigerant**  
R290 allows for zero ozone depletion potential (ODP) and has a global warming potential (GWP) of just 0.02. The lower the GWP the better a substance is for the environment.

The below items can be ordered to customize your True Open Air unit. Delivery time may vary as not all unit configurations are stocked.



**Locking Security Cover** Silver/White/Black  
\*Only on solid side versions



2 1/2", 4", 5" Castors



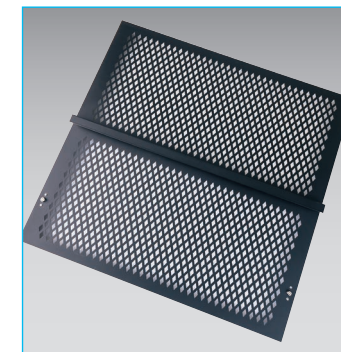
6" Legs



Pricing Strips



6" Seismic Legs



**Vandal Pane**  
\*Only on solid side versions



**Heated Condensate Pan**

## TOAM Models



TOAM-Solid Sides



TOAM-No Sign



TOAM-Glass Sides

### TOAM | Solid Sides (w/ sign panel)

Model Name	Shelves	Dimensions (L x D x H)
TOAM-30-HC~TSL01	4	30 x 29 <sup>7</sup> / <sub>8</sub> x 78 <sup>1</sup> / <sub>2</sub>
TOAM-36-HC~TSL01	4	36 x 29 <sup>7</sup> / <sub>8</sub> x 78 <sup>1</sup> / <sub>2</sub>
TOAM-48-HC~TSL01	4	48 x 29 <sup>7</sup> / <sub>8</sub> x 78 <sup>1</sup> / <sub>2</sub>
TOAM-72-HC~TSL01	8	72 x 29 <sup>7</sup> / <sub>8</sub> x 78 <sup>1</sup> / <sub>2</sub>

### TOAM | Solid Sides (w/o sign panel)

Model Name	Shelves	Dimensions (L x D x H)
TOAM-30-HC~NSL01	4	30 x 29 <sup>7</sup> / <sub>8</sub> x 78 <sup>1</sup> / <sub>2</sub>
TOAM-36-HC~NSL01	4	36 x 29 <sup>7</sup> / <sub>8</sub> x 78 <sup>1</sup> / <sub>2</sub>
TOAM-48-HC~NSL01	4	48 x 29 <sup>7</sup> / <sub>8</sub> x 78 <sup>1</sup> / <sub>2</sub>
TOAM-72-HC~NSL01	8	72 x 29 <sup>7</sup> / <sub>8</sub> x 78 <sup>1</sup> / <sub>2</sub>

### TOAM | Glass Sides (w/ sign panel)

Model Name	Shelves	Dimensions (L x D x H)
TOAM-30GS-HC~TSL01	4	30 x 29 <sup>7</sup> / <sub>8</sub> x 78 <sup>1</sup> / <sub>2</sub>
TOAM-36GS-HC~TSL01	4	36 x 29 <sup>7</sup> / <sub>8</sub> x 78 <sup>1</sup> / <sub>2</sub>
TOAM-48GS-HC~TSL01	4	48 x 29 <sup>7</sup> / <sub>8</sub> x 78 <sup>1</sup> / <sub>2</sub>
TOAM-72GS-HC~TSL01	8	72 x 29 <sup>7</sup> / <sub>8</sub> x 78 <sup>1</sup> / <sub>2</sub>



>  
Night Cover  
shown comes  
standard.



## TOAM Built-In



### Considering a Built-in?

Our TOAMs were intentionally engineered to match heights with our existing line of merchandisers.



**True**<sup>®</sup>  
REFRIGERATION



2001 East Terra Lane, O'Fallon, MO 63366-4434 p: 636.240.2400 f: 636.272.2408 toll free: 800.325.6152 parts toll free: 800.424.8783

[truemfg.com](http://truemfg.com)

